



A CELEBRATION OF FITNESS
XULT FITNESS CATALOG

FEATURING SOLUTIONS BY: XULT, TRX, TRIGGERPOINT, AND DYNAMAX



XULT FITNESS

A brand of Johnson Health Tech, XULT Fitness celebrates the exercise experience by providing a wide array of equipment designed to build better bodies and maximize performance. From power lifting to yoga, from athletics to recovery, XULT offers a complete portfolio to help exercise enthusiasts redefine themselves from head to toe.

RACKS & RIGS 4-11

Incline
Wall-Mounted
Freestanding
Wissota
Monkey
Defender

STRENGTH EQUIPMENT 12-23

Dumbbells
Barbells
Bars
Bar & Attachment Accessories
Kettlebells
Medicine & Slam Balls
Plates
Group X

FUNCTIONAL FITNESS 24-27

TRX®
Battle Ropes
Resistance Bands

PERFORMANCE TRAINING 28-29

Plyometrics
Boxing
Jump Ropes
Gym Next Flex Timer

BALANCE, CORE AND RECOVERY 30-31

STORAGE 32-35

Accessories Storage Racks
Dumbbell & Barbell Racks

TABLE OF CONTENTS

RACKS & RIGS

Durable and versatile, our racks and rigs are built to withstand tough training environments and a steady stream of strength enthusiasts going for their personal best. Count on our smart, simple designs for superior stability, integrated storage, configurations that serve multiple users and options that fit virtually any space.



Training station with pull-up bar provides space for multiple users, bodyweight exercises, suspension training and equipment storage.



Laser-cut numbers and holes with 2" spacing accommodate a range of user heights and a variety of lifts.



3" x 3", 11-gauge steel uprights offer stability and support for users.



High-quality powder-coat finish provides a polished appearance that lasts.

RIGS LIMITED WARRANTY

Frame: 10 years | Finish: 5 years | Other Items: 3 years | Accessories: 1 year

** Original Purchaser (non-transferable), warranty excludes normal wear/tear and covers defects in materials and manufacturing.



KULT INCLINE RIG

The Kult incline rig brings excitement, versatility and challenge to athletic training facilities and fitness studios. A robust design lets multiple users train independently or as part of a group exercise program, and dedicated storage space provides easy access to training accessories. Ideal for pull-ups, kipping, muscle-ups, squats, military press, bench press, band work and much more.

FEATURES

- 12' uprights provide additional functionality and challenge
- Multiple stations with monkey bars offer virtually limitless options for group classes and multiple users training independently
- Two sets of adjustable J-hooks and safety arms create dedicated spaces for bench and squat workouts



TECH SPECS

Max User	300 lbs.
Training Weight	700 lbs.
Dimensions (L x D x H)	286.6" x 108.25" x 144.25"
Assembled Weight	1,356 lbs.
Shipping Weight	1,551 lbs.

FREESTANDING RIG

A great addition to any athletic training facility or fitness studio, Xult freestanding Rigs are as versatile as they are durable. Most units provide ample space for multiple user to train independently or as part of a group exercise program. Ideal for pull-ups, kipping, muscle-ups, squats, military press, bench press, band work and much more.

SIZES: 4', 10', 14', 20', 24'

FEATURES

- Adjustable J-hooks for each 42" section create dedicated spaces for bench and squat workouts



TECH SPECS	4"	10'	14"	20' (shown above)	24'
Max User	300 lbs	300 lbs.	300 lbs	300 lbs.	300 lbs.
Training Weight	700 lbs	700 lbs.	700 lbs	700 lbs.	700 lbs.
Dimensions (L x D x H)	50.5" x 86.3" x 108.25"	123.5" x 86.3" x 108.25"	168.5" x 86.3" x 108.25"	241.5" x 86.3" x 108.25"	286.5" x 86.3" x 108.25"
Assembled Weight	244 lbs	373 lbs.	517 lbs	647 lbs.	790 lbs.
Shipping Weight	286 lbs	436 lbs.	607 lbs	758 lbs.	928 lbs.

WALL-MOUNTED RIG

A great addition to any athletic training facility or fitness studio, space-saving wall-mounted rigs from Xult are as versatile as they are durable. Most units provide ample space for multiple users to train independently or as part of a group exercise program. Ideal for pull-ups, kipping, muscle-ups, squats, military press, bench press, band work and much more.

SIZES: 4', 10', 14', 20', 24'

FEATURES

- Adjustable J-hooks for each 42" section create dedicated spaces for bench and squat workout



TECH SPECS	4"	10"	14"	20' (shown above)	24'
Max User	300 lbs	300 lbs	300 lbs	300 lbs.	300 lbs.
Training Weight	700 lbs	700 lbs	700 lbs	700 lbs.	700 lbs.
Dimensions (L x D x H)	50" x 78.15" x 108.25"	123.5" x 78.15" x 108.25"	168.5" x 78.15" x 108.25"	241.5" x 78.15" x 108.25"	286.5" x 78.15" x 108.25"
Assembled Weight	137 lbs	209 lbs	288 lbs	360 lbs.	439 lbs.
Shipping Weight	161 lbs	245 lbs	339 lbs	432 lbs.	517 lbs.

WISSOTA RIG

Versatile Xult Wissota rig systems let multiple users train independently or as part of a group exercise program, providing a virtually endless variety of exercises and workouts. Ideal for pull-ups, kipping, muscle-ups, squats, military press, bench press, band work and much more. Dedicated storage space provides easy access to all your training equipment.

SIZES: 14', 24', 34'

FEATURES

- Adjustable J-hooks and safety arms for each 42" section create dedicated spaces for bench and squat workouts
- 24" extensions on the 42" training bays provide additional training space and easy-to-access storage
- Storage shelves offer easy access to weight plates, dumbbells, kettlebells and medicine balls



34' WISSOTA RIG

TECH SPECS	14'	24'	34' (shown above)
Max User	300 lbs.	300 lbs.	300 lbs.
Training Weight	700 lbs.	700 lbs.	700 lbs.
Dimensions (L x D x H)	168.6" x 180" x 108.25"	286.6" x 180" x 108.25"	404.5" x 180" x 108.25"
Assembled Weight	1,284 lbs.	2,019 lbs.	2,753 lbs.
Shipping Weight	1,482 lbs.	2,337 lbs.	3,188 lbs.

Showcase your brand with customization! Ask your sales rep for details.



14' WISSOTA RIG



24' WISSOTA RIG

MONKEY RIG

The 6' monkey rig gives your facility a versatile and compact training solution great for a wide range of users. The open design accommodates multiple users training independently or as part of a group exercise program. Add the optional storage to help keep your facility clean and safe.



TECH SPECS

Max User	300 lbs.
Training Weight	700 lbs.
Dimensions (L x D x H)	78.5" x 79" x 108.25 "
Assembled Weight	305 lbs.
Shipping Weight	350 lbs.

Showcase your brand with customization! Ask your sales rep for details.

DEFENDER RIG

From athletic training facilities to fitness studios, the Defender is a compact and versatile addition. Built-in storage provides an ideal location for your training equipment, keeping your facility clean and safe.

SIZES: 4' OR 6'

FEATURES

- Storage shelves offer easy access to weight plates, dumbbells, kettlebells and medicine balls



TECH SPECS	4'	6'
Max User	300 lbs.	300 lbs.
Training Weight	700 lbs.	700 lbs.
Dimensions (L x D x H)	50.5" x 60" x 94.25"	78.5" x 60" x 94.25"
Assembled Weight	428 lbs.	502 lbs.
Shipping Weight	509 lbs.	583 lbs.

STRENGTH EQUIPMENT

When it comes to serving real strength training enthusiasts, nothing says they're in the right place like a complete selection of bars, benches and dumbbells. Expect everything your members love about these weight room favorites, plus thoughtful design features like smarter dumbbell and bar shapes.

DUMBBELLS | PREMIUM MULTI-SIDED URETHANE

Multi-sided design limits rolling and provides stability on flat surfaces. Premium urethane surface welded into a permanent solid-steel construction. Also available in individual pairs. Five-year limited warranty.*

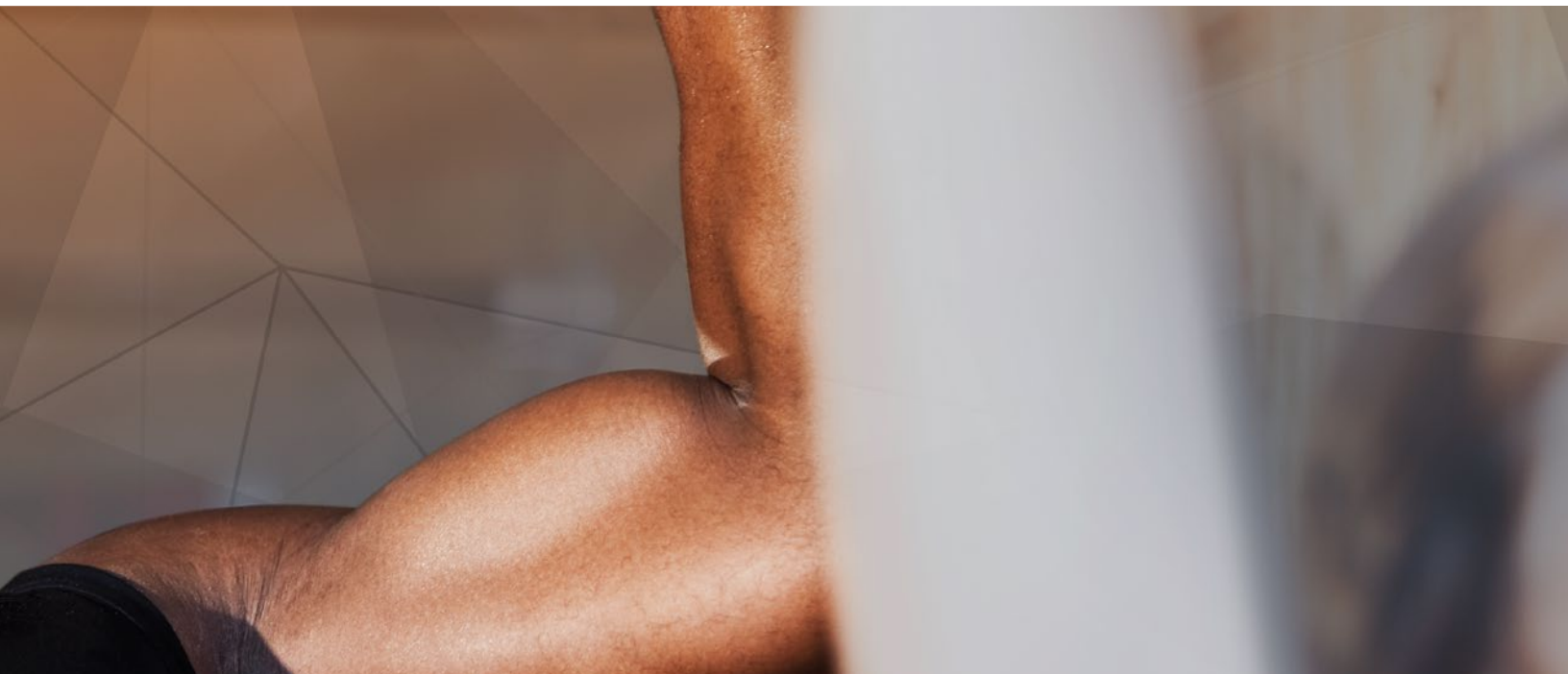
SETS: 5–50 lbs., 55–100 lbs., 105–125lbs., 130–150lbs., 7.5–37.5 lbs.

XT-5-50URE-MTI-P	XULT URE Multi DB 005-050 Set Black Plus
XT-55-100URE-MTI-P	XULT URE Multi DB 055-100 Set Black Plus
XT-105SETURE-MTI-P	XULT URE Multi DB 105-125 Set Black Plus
XT-130SETURE-MTI-P	XULT URE Multi DB 130-150 Set Black Plus
XT-7.5SETURE-MTI-P	XULT URE Multi DB 007.5-037.5 Set Black Plus



*Limited Warranty

This limited warranty covers defects in materials and workmanship for the original owner. This warranty shall not apply to defects caused by normal wear and tear, physical abuse or vandalism of the product. Any modifications or alterations will void the warranty.



DUMBBELLS | PREMIUM ROUND URETHANE

Premium urethane surface welded into a permanent solid-steel construction.
Also available in individual pairs. Five-year limited warranty.*

SETS: 5–50 lbs., 55–100 lbs., 105–125 lbs., 130–150 lbs., 155–175 lbs., 180–200 lbs., 7.5–37.5 lbs.

XT-5-50URE-RND-P	XULT URE Rnd DB 005-050 Set Black Plus
XT-55-100URE-RND-P	XULT URE Rnd DB 055-100 Set Black Plus
XT-105SETURE-RND-P	XULT URE Rnd DB 105-125 Set Black Plus
XT-130SETURE-RND-P	XULT URE Rnd DB 130-150 Set Black Plus
XT-155SETURE-RND-P	XULT URE Rnd DB 155-175 Set Black Plus
XT-180SETURE-RND-P	XULT URE Rnd DB 180-200 Set Black Plus
XT-7.5-37.5URE-RND-P	XULT URE Rnd DB 007.5-037.5 Set Black Plus

DUMBBELLS | ROUND

Made with virgin rubber or urethane to ensure the highest quality. Also available in individual pairs.
Rubber: three-year limited warranty. Urethane: five-year limited warranty.*

SETS: 5–50 lbs., 55–100 lbs., 7.5–37.5 lbs.

RUBBER:

XT-5-50RBR-RND	XULT Rubber Round DB 005-050 Set Black
XT-55-100RBR-RND	XULT Rubber Round DB 055-100 Set Black
XT-7.5-37.5RBR-RND	XULT Rubber Round DB 007.5-037.5 Set Black

URETHANE:

XT-5-50URE-RND	XULT Urethane Round DB 005-050 Set Black
XT-55-100URE-RND	XULT Urethane Round DB 055-100 Set Black
XT-7.5-37.5URE-RND	XULT Urethane Round DB 007.5-037.5 Set Black



DUMBBELLS | URETHANE HEX

Multi-sided design limits rolling and provides stability on flat surfaces. Premium urethane surface welded into a permanent solid-steel construction. Also available in individual pairs. Five-year limited warranty.*

SETS: 5-50 lbs., 55-100 lbs., 2.5-27.5 lbs.

XT-5-50URE-HEX	XULT Urethane Hex DB 005-050 Set Black
XT-55-100URE-HEX	XULT Urethane Hex DB 055-100 Set Black
XT-2.5-37.5URE-HEX	XULT Urethane Hex DB 002.5-027.5 Set Blk



DUMBBELLS | RUBBER HEX

Classic hex design prevents rolling. Also available in individual pairs.

Rubber: three-year limited warranty.*

SETS: 5-50 lbs., 55-100 lbs., 2.5-27.5 lbs.

XT-5-50RBR-HEX	XULT Rubber Hex DB 005-050 Set Black
XT-55-100RBR-HEX	XULT Rubber Hex DB 055-100 Set Black
XT-2.5-27.5RBR-HEX	XULT Rubber Hex DB 002.5-027.5 Set Black



DUMBBELLS | BEAUTY BELLS

Developed specifically for high usage environments with an anti-roll design. Encased by a thick layer of long-lasting rubber or urethane. Also available in individual pairs.

Rubber: three-year limited warranty. Urethane: five-year limited warranty.*

SETS: 2-20 LBS, AVAILABLE INDIVIDUALLY THROUGH 40 LBS.

URETHANE:

XULT URE Studio DB 02-20 lbs. Black Set XT-02-20URE-STU

RUBBER:

XULT Rubber Studio DB 02-20 lbs. Black Set XT-02-20RBR-STU



DUMBBELLS | NEOPRENE

Two-year limited warranty.*

Rubber: three-year limited warranty. Urethane: five-year limited warranty

XT-01NEO-STU	XULT Neoprene Single DB 01 lbs. Peach
XT-02NEO-STU	XULT Neoprene Single DB 02 lbs. Violet
XT-03NEO-STU	XULT Neoprene Single DB 03 lbs. Light Blue
XT-04NEO-STU	XULT Neoprene Single DB 04 lbs. Dark Blue
XT-05NEO-STU	XULT Neoprene Single DB 05 lbs. Green
XT-06NEO-STU	XULT Neoprene Single DB 06 lbs. Yellow
XT-07NEO-STU	XULT Neoprene Single DB 07 lbs. Orange
XT-08NEO-STU	XULT Neoprene Single DB 08 lbs. Rust
XT-09NEO-STU	XULT Neoprene Single DB 09 lbs. Red
XT-10NEO-STU	XULT Neoprene Single DB 10 lbs. Brown
XT-12NEO-STU	XULT Neoprene Single DB 12 lbs. Black
XT-15NEO-STU	XULT Neoprene Single DB 15 lbs. Grey



BARBELL | PREMIUM URETHANE ROUND

Traditional round heads covered in high-grade odorless urethane attached to solid steel cores.

Available as EZ-curl or straight barbells. Also available individually. Five-year limited warranty.*

SETS: 20–110 lbs.

EZ-CURL:

XT-650-URE-BBEZ-P XULT URE Barbell EZ-Curl 20–110 lbs. Black Plus

STRAIGHT:

XT-650-URE-BBST-P XULT URE Barbell STR 20–110 lbs. Black Plus



BARBELL | PREMIUM URETHANE MULTI-SIDED

Multi-sided heads covered in a high-grade odorless urethane attached to solid steel cores. Available as EZ-curl or straight barbells.

Also available individually. Five-year limited warranty.*

SETS: 20–110 lbs.

EZ-CURL:

XT-650-URE-BBEZM-P XULT URE Multi BB EZ 20–110 lbs. Black Plus

STRAIGHT:

XT-650-URE-BBSTM-P XULT URE Multi BB STR 20–110 lbs. Black Plus



Showcase your brand with customization!
Ask your sales rep for details.

BARBELL | URETHANE ROUND

Premium urethane coating is anchored to the steel core.

Available as EZ-curl or straight barbells. Also available individually.

Five-year limited warranty.*

EZ-CURL

XT-20-110URE-BBEZ XULT URE Barbell EZ Curl 20–110 lbs. Black

STRAIGHT

XT-20-110URE-BBST XULT URE Barbell Straight 20–110 lbs. Black



BARBELL | RUBBER ROUND

Thick rubber coating is anchored to the steel core. Available as

EZ-curl or straight barbells. Also available individually.

Three-year limited warranty.*

STRAIGHT

XT-20-110RBR-BBST XULT Rubr Barbell Straight 20–110 lbs. Black

EZ-CURL

XT-20-110RBR-BBEZ XULT Rubr Barbell EZ Curl 20–110 lbs. Black



BARS | OLYMPIC 20KG

Ideal multipurpose bar with medium whip used for dynamic Olympic-style lifts and heavy-load powerlifting.

XULT 20 kg Oly Bar 28.5 mm Full Knurl XT-20KG-OLY-BZ-FK
 XULT 20 kg Oly Bar 28.5 mm Bench Knurl XT-20KG-OLY-BZ-BK
 XULT 20 kg Oly Bar 32 mm-134K PSI Black - Bench knurl XT-20 KG-32 MM-132



BARS | OLYMPIC 15KG

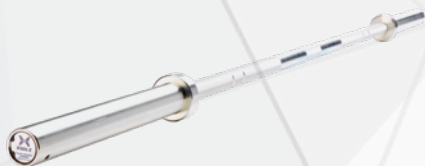
XULT 15 kg Oly Bar 25 mm Full Knurl XT-15KG-OLY-BZ-FK
 XULT 5' Bar 30 mm-125K PSI - Black XT-5-30MMBAR



BARS | POWER

Designed for heavy-load powerlifting. The bar has no whip and includes center knurling to help secure back lifts.

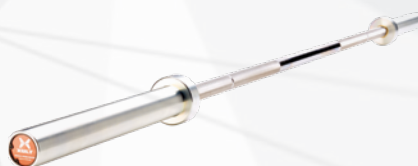
XULT 20 kg Power Bar 28.5 mm Deep Knurl XT-20KG-PWR-BZ-DK
 XULT 20 kg Power Bar 28.5 mm Medium Knurl XT-20KG-PWR-BZ-FK
 XULT 45 lbs. Power Bar 32 mm Bar Full Knurl XT-45LB-PWR-BZ-BK



BARS | 20 KG IWF BEARING

Designed for the serious weightlifter. The alloy steel bar has 10 precision needle bearing to provide the best rotation available. 2,000 lbs. tested, 190K psi tensile strength.

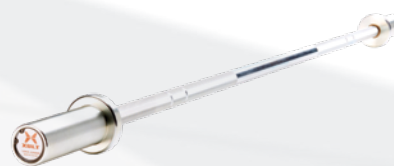
XULT 20 kg IWF Bearing Bar 28 mm Full Knurl XT-20KG-IWF-HC-FK



BARS | 10 KG JUNIOR

Shorter sleeves allow for reduced weight for more control. 600 lbs. tested, 180K psi.

XULT 10 kg Junior Bar 25 mm Full Knurl XT-10KG-JNR-BZF



BARS | 15 LBS. TECHNIQUE

The lighter bars help users learn proper technique. 150 lbs. max load.

XULT 15 lbs. Training Bar 28 mm Full Knurl XT-15LB-TRN-AL-FK



BARS | 2.5 TRICEP

34" wide with 6.8" sleeves .

34" Tricep Bar 13 kg 30mm XT-10KG-TRICEP



TRAP BAR | 56"

Trap Bar 56", 400 lbs. 30 mm XT-22.5KG-TRAP-BAR



4' EZ CURL BAR

XULT 4' EZ Curl Bar 30 mm - Black XT-4-30-MM-EZ



OLYMPIC SPRING COLLAR PAIR

XULT Olympic Spring Collar Pair XT-SPRING COLLAR



TRICEP PRESS DOWN ROPE

XULT Triceps Press Down Rope XT-TRICEP-ROPE



28" REVOLVING CURL BAR

XULT 28" Revolving Curl Bar XT-28"-REVOLVE-CRL



48" REVOLVING LAT BAR

XULT 48" Revolving Lat Bar XT-48"-REVOLVE-LAT



34" PRO STYLE REVOLVING LAT BAR

XULT 34" Pro Style Revolving Lat Bar XT-34"-REVOLVE-LAT



SEATED ROW CHINNING BAR

XULT Seated Row/Chinning Bar XT-SEATROW



20" REVOLVING STRAIGHT BAR

XULT 20" Revolving Straight Bar XT-20"-REVOLVE-STR



TRICEPS PRESS DOWN BAR

XULT Triceps Press Down Bar XT-TRICEP-BAR



MULTIPURPOSE V-BAR

XULT Multipurpose V-bar XT-MULTI-V



DELUXE STIRRUP HANDLE

XULT Deluxe Stirrup Handle. Sold Individually. XT-DELUXE-STIRRUP

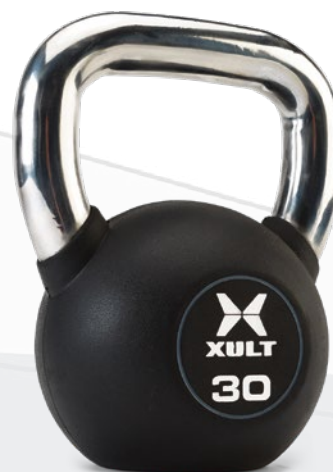


RUBBER KETTLEBELL

High-quality virgin rubber coating surrounds a solid cast steel interior with a stainless steel handle.

Wear resistant matte textured finish helps create longevity. Three-year limited warranty.

XULT Rubr SS Handle Kettlebell 5 lbs. Black	XT-005RBR-SS-KB
XULT Rubr SS Handle Kettlebell 10 lbs. Black	XT-010RBR-SS-KB
XULT Rubr SS Handle Kettlebell 15 lbs. Black	XT-015RBR-SS-KB
XULT Rubr SS Handle Kettlebell 20 lbs. Black	XT-020RBR-SS-KB
XULT Rubr SS Handle Kettlebell 25 lbs. Black	XT-025RBR-SS-KB
XULT Rubr SS Handle Kettlebell 30 lbs. Black	XT-030RBR-SS-KB
XULT Rubr SS Handle Kettlebell 35 lbs. Black	XT-035RBR-SS-KB
XULT Rubr SS Handle Kettlebell 40 lbs. Black	XT-040RBR-SS-KB
XULT Rubr SS Handle Kettlebell 45 lbs. Black	XT-045RBR-SS-KB
XULT Rubr SS Handle Kettlebell 50 lbs. Black	XT-050RBR-SS-KB
XULT Rubr SS Handle Kettlebell 55 lbs. Black	XT-055RBR-SS-KB
XULT Rubr SS Handle Kettlebell 60 lbs. Black	XT-060RBR-SS-KB
XULT Rubr SS Handle Kettlebell 70 lbs. Black	XT-070RBR-SS-KB
XULT Rubr SS Handle Kettlebell 80 lbs. Black	XT-080RBR-SS-KB
XULT Rubr SS Handle Kettlebell 90 lbs. Black	XT-090RBR-SS-KB



CAST KETTLEBELL

XULT Cast Kettlebell 5 lbs.	XT-005CAST-KB
XULT Cast Kettlebell 10 lbs.	XT-010CAST-KB
XULT Cast Kettlebell 15 lbs.	XT-015CAST-KB
XULT Cast Kettlebell 20 lbs.	XT-020CAST-KB
XULT Cast Kettlebell 25 lbs.	XT-025CAST-KB
XULT Cast Kettlebell 30 lbs.	XT-030CAST-KB
XULT Cast Kettlebell 35 lbs.	XT-035CAST-KB
XULT Cast Kettlebell 40 lbs.	XT-040CAST-KB
XULT Cast Kettlebell 45 lbs.	XT-045CAST-KB
XULT Cast Kettlebell 50 lbs.	XT-050CAST-KB



VINYL KETTLEBELL

XULT Vinyl Kettlebell 20 lbs.	XT-020VINYL-KB
XULT Vinyl Kettlebell 25 lbs.	XT-025VINYL-KB
XULT Vinyl Kettlebell 30 lbs.	XT-030VINYL-KB
XULT Vinyl Kettlebell 35 lbs.	XT-035VINYL-KB
XULT Vinyl Kettlebell 40 lbs.	XT-040VINYL-KB



For storage solutions, see page 32.

SLAM BALLS

Heavy-duty rubber shell designed for explosive movements like tossing and slamming.

XULT Slam Ball 6 lbs. 7.9" Diameter	XT-06-SLAMBALL
XULT Slam Ball 8 lbs. 7.9" Diameter	XT-08-SLAMBALL
XULT Slam Ball 10 lbs. 7.9" Diameter	XT-10-SLAMBALL
XULT Slam Ball 15 lbs. 7.9" Diameter	XT-15-SLAMBALL
XULT Slam Ball 20 lbs. 7.9" Diameter	XT-20-SLAMBALL
XULT Slam Ball 25 lbs. 9.8" Diameter	XT-25-SLAMBALL
XULT Slam Ball 30 lbs. 9.8" Diameter	XT-30-SLAMBALL



DYNAMAX SOFT-SHELL MED BALL

Impact-absorbing and scuff-resistant. Soft-shelled with a heavy-duty vinyl covering to ensure longevity.

Dynamax MB04 4 lbs. 14" Soft-shell Med Ball	ZMD4003898
Dynamax MB06 6 lbs. 14" Soft-shell Med Ball	ZMD4002873
Dynamax MB08 8 lbs. 14" Soft-shell Med Ball	ZMD4002874
Dynamax MB10 10 lbs. 14" Soft-shell Med Ball	ZMD4003454
Dynamax MB12 12 lbs. 14" Soft-shell Med Ball	ZMD4003455
Dynamax MB14 14 lbs. 14" Soft-shell Med Ball	ZMD4003456
Dynamax MB16 16 lbs. 14" Soft-shell Med Ball	ZMD4003457
Dynamax MB18 18 lbs. 14" Soft-shell Med Ball	ZMD4003458
Dynamax MB20 20 lbs. 14" Soft-shell Med Ball	ZMD4003459
Dynamax MB25 25 lbs. 14" Soft-shell Med Ball	ZMD4003899
Dynamax MB30 30 lbs. 14" Soft-shell Med Ball	ZMD4003900



MEDICINE BALLS

XULT Med Ball 2 lbs. 7.5" Diameter	XT-02-MEDBALL
XULT Med Ball 4 lbs. 7.5" Diameter	XT-04-MEDBALL
XULT Med Ball 6 lbs. 9" Diameter	XT-06-MEDBALL
XULT Med Ball 8 lbs. 9" Diameter	XT-08-MEDBALL
XULT Med Ball 10 lbs. 9" Diameter	XT-10-MEDBALL
XULT Med Ball 12 lbs. 11.25" Diameter	XT-12-MEDBALL
XULT Med Ball 15 lbs. 11.25" Diameter	XT-15-MEDBALL
XULT Med Ball 18 lbs. 11.25" Diameter	XT-18-MEDBALL
XULT Med Ball 20 lbs. 11.25" Diameter	XT-20-MEDBALL
XULT Med Ball 25 lbs. 11.25" Diameter	XT-25-MEDBALL



PREMIUM TRAINING BUMPER PLATE

High-grade synthetic virgin rubber or urethane permanently bonded to a steel core.

Wear-resistant matte texture keeps bumpers looking new longer. Sold individually.

Rubber: three-year limited warranty. Urethane: five-year limited warranty

Rubber

XULT Premium Bumper Plate Rubr 10 lbs. Black	XT-10RUBR-BP
XULT Premium Bumper Plate Rubr 25 lbs. Black	XT-25RUBR-BP
XULT Premium Bumper Plate Rubr 35 lbs. Black	XT-35RUBR-BP
XULT Premium Bumper Plate Rubr 45 lbs. Black	XT-45RUBR-BP

Urethane*

XULT Premium Bumper Plate URE 10 lbs. Black	XT-10URE-BP
XULT Premium Bumper Plate URE 25 lbs. Black	XT-25URE-BP
XULT Premium Bumper Plate URE 35 lbs. Black	XT-35URE-BP
XULT Premium Bumper Plate URE 45 lbs. Black	XT-45URE-BP

*Available in competition colors (red, green, yellow, blue)

TRAINING BUMPER PLATES

High-grade virgin rubber bonded to a steel core. Matte-textured surface keeps bumper looking new. Colors match IWF standards. Sold individually.

Two-year limited warranty (one-year for 10- and 15-lbs. bumpers).

XULT Training Bumper Plate Rubr 10 lbs. Black	XT-10RUBR-BP-ECO
XULT Training Bumper Plate Rubr 15 lbs. Red	XT-15RUBR-BP-ECO
XULT Training Bumper Plate Rubr 25 lbs. Green	XT-25RUBR-BP-ECO
XULT Training Bumper Plate Rubr 35 lbs. Yellow	XT-35RUBR-BP-ECO
XULT Training Bumper Plate Rubr 45 lbs. Blue	XT-45RUBR-BP-ECO



URETHANE GRIP PLATE

Urethane coating with metal core. Sold individually. Five-year limited warranty.

XULT Urethane Plate 2.5 lbs. Black	XT-02.5URE-PLATE
XULT Urethane Plate 5 lbs. Black	XT-05URE-PLATE
XULT Urethane Plate 10 lbs. Black	XT-10URE-PLATE
XULT Urethane Plate 25 lbs. Black	XT-25URE-PLATE
XULT Urethane Plate 35 lbs. Black	XT-35URE-PLATE
XULT Urethane Plate 45 lbs. Black	XT-45URE-PLATE



RUBBER GRIP PLATE

High-quality virgin rubber with metal core. Sold individually.

Three-year limited warranty.

XULT Rubber Plate 2.5 lbs. Black	XT-02.5RUBR-PLATE
XULT Rubber Plate 5 lbs. Black	XT-05RUBR-PLATE
XULT Rubber Plate 10 lbs. Black	XT-10RUBR-PLATE
XULT Rubber Plate 25 lbs. Black	XT-25RUBR-PLATE
XULT Rubber Plate 35 lbs. Black	XT-35RUBR-PLATE
XULT Rubber Plate 45 lbs. Black	XT-45RUBR-PLATE



Showcase your brand with customization! Ask your sales rep for details.

GROUP X SET

XULT Group X Set 20 Sets + Rack XT-GRPX20SET
 XULT Group X Set XT-GRPXSET
 (2 each; 2.5, 5, 10 plates/Bar/Collars)



GROUP X PLATES

XULT Group X 2.5 lbs., Single XT-02.5UREGRPX
 XULT Group X 5 lbs., Single XT-005UREGRPX
 XULT Group X 10 lbs., Single XT-010UREGRPX
 XULT Group X 20 lbs., Single XT-020UREGRPX



GROUP X BAR

XULT Group X Bar XT-BARGRPX

GROUP X COLLAR

Collar: Pair XT-COLLARGRPX



FUNCTIONAL FITNESS

Offer more dynamic training options with versatile functional fitness accessories that stand up to hard use day after day. Choose a variety of strength and resistance bands to serve a wide range of fitness levels.

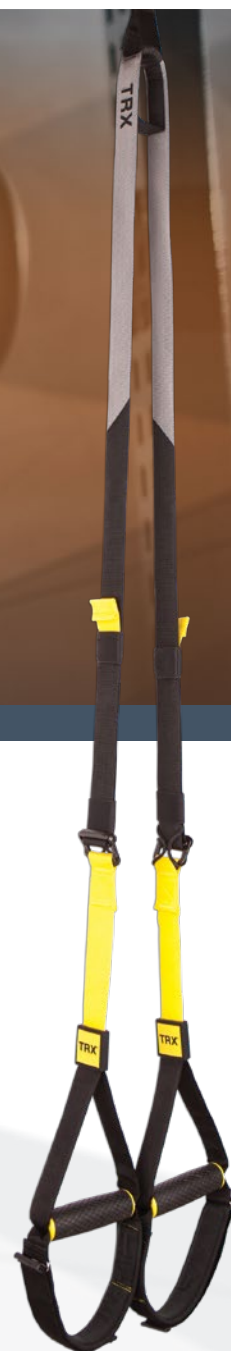




TRX® COMMERCIAL SUSPENSION TRAINER™

The TRX Club Suspension Trainer incorporates molded rubber constructed to meet the demands of high-use commercial environments. Includes commercial-grade rubber handles, a DuPont® Kevlar® Equalizer Loop, quick-adjust steel barreHock, Xtender Strap and locking carabiner to deter theft.

TRXCLUB3



BATTLE ROPES 1.5" X 30'

WITH SLEEVE

XULT Battle Rope 1.5" x 30' with Sleeve XT-1.5" x 30' ROPE-S

WITHOUT SLEEVE (shown)

XULT Battle Rope 1.5" x 30' No Sleeve XT-1.5" x 30' ROPE



PREMIUM RESISTANCE BANDS (RESISTANCE BAND TRAINING/RBT)

High-quality, quantum-looped band for all levels of resistance training.

Red, Small	ZMD04003901
Black, Medium	ZMD4003902
Purple, Large	ZMD04003903
Green, X-Large	ZMD04003904
Blue, Strong	ZMD4003905

PREMIUM RESISTANCE BAND PACKAGE (RBT)

A great starter package for a boot camp or fitness club owner.

Includes (2) Red, (2) Black, (2) Purple, (2) Green.

ZMD4002514



TRAINING HANDLES (RBT)

Handle designed allows user to easily transition in and out of any horizontal-based band exercise. Handle: 6" long and 3/4" diameter foam covered heavy-duty PVC.

Carabiner: 1 1/4" width with 300 lbs. tensile strength. Strap: 1" heavy-duty nylon strapping professional sewn using double stitching to ensure maximum safety and durability.

ZMD4002515





STRENGTH BAND

XULT Strength Band 0.5" Light Red	XT-STR-BAND-XXLR
XULT Strength Band 0.85" Medium Purple	XT-STR-BAND-XLP
XULT Strength Band 1.25" Heavy Black	XT-STR-BAND-LB
XULT Strength Band 1.8" X-Heavy Orange	XT-STR-BAND-MO



PERFORMANCE TRAINING

Add performance training equipment to your facility to help athletes of all kinds experience the full-body intensity they need to reach their physical potential.

3-IN-1 SOFT PLYO BOX

Space-saving design provides three different heights (20", 24" and 30") in one box. A high-density foam core provides both a stable and safe cushioned landing area. A textured gripper area helps to minimize sliding during use.

XULT Tri Plyo Box 20", 24", 30" 1pc XT-TRI PLYO



BOXING EQUIPMENT

PRO BOXING HEAVY BAG

Manufactured with long-lasting shell and lining. Packed for a firm, yet giving feel. Professionally stuffed with a high-density shredded material that packs better and settles less than traditional bag stuffing. High-quality seat belt nylon straps for D-ring support. Triple-stitched built-in straps.

Black, 80 lbs. ZMD4002524

PRO BOXING GLOVES

Pro-style leather gloves are great for cardio training, hitting the bag and sparring.

12 oz. ZMD4002525

16 oz. ZMD4002526





JUMP ROPES

Adjustable Jump Rope: Bearings

XULT Adjustable Jump Rope: Bearings

XT-JROPE-ADJ

Adjustable Basic Speed Rope 6'-9'

XULT Adjustable Basic Speed Rope 6'-9'

XT-JROPE-ADJ-BASIC



GYMNEXT FLEX TIMER

The GymNext Flex Timer combines a crystal-clear LED display with an easy-to-use interval timer app creating the best, most powerful gym timer ever made.

ZMD4003444

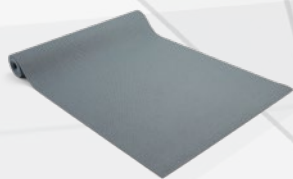


BALANCE, CORE & RECOVERY

Encourage full-body fitness with balance and core equipment that elevates exercise by bringing it down to the floor, then help users recover with rollers and balls uniquely designed to soothe hot spots.

YOGA MAT | (5 MM, 75" X 24")

Yoga Mat - 5 mm PVC 75" x 24" - Black/Blue
XT-5MMPVCMAT



WALL MAT RACK

XULT Wall Mat Rack XT-WALL-MAT-RACK



HANGING FIT MAT

Fit Mat w/grommets 12 mm TPE 56" x 23" - Black
XT-12MM-TPE-56"MAT

Fit Mat w/grommets 12 mm TPE 71" x 23" - Black
XT-12MMTPEFITMAT



ANTI-BURST FIT BALL

55 cm 1,000 lbs. Anti-burst Fit Ball, Dark Blue XT-55CM-1000BALL
65 cm 1,000 lbs. Anti-burst Fit Ball, Dark Gray XT-65CM-1000BALL
75 cm 1,000 lbs. Anti-burst Fit Ball, Blue/Gray XT-75CM-1000BALL

Recommended sizes

55CM FOR PERSONS 5' TO 5' 5"

65CM FOR PERSONS 5' 5" TO 6'

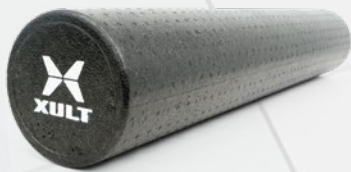
75CM FOR PERSONS 6' AND OVER





HIGH-DENSITY FOAM ROLLER

XULT High-density Foam Roller 6" x 36" XT-6" x 36"-RLR-HD



TRIGGERPOINT MASSAGE BALL (5")

The innovative MB5™ foam massage ball is designed to replicate the feeling of a massage therapist's hand by providing targeted deep-tissue compression to address discomfort and tightness. With a slip-resistant texture to enhance stabilization, its EVA foam surface makes it easy to clean.

03303

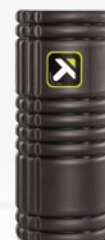


TRIGGERPOINT GRID FOAM ROLLER

The GRID® 1.0 and 2.0, the original hollow-core rollers, are firmer than traditional solid foam rollers. A patented design features a hollow core wrapped in multi-density foam to deliver firm compression. The GRID is the go-to roller to improve mobility and circulation, recommended by sports doctors, chiropractors and physical therapists.

Black, 13" 00201

Black, 26" 00237





STORAGE

Keep your strength training area neat and inviting with a range of storage solutions that make it easy to organize and access your most popular equipment.

MED BALL RACK

5 BALLS (shown)

XULT Med Ball Rack: 5 Balls

XT-MEDBALL-RACK-05

10 BALLS

XULT Med Ball Rack: 10 Balls

XT-MEDBALL-RACK-10

*Weights sold separately



KETTLEBELL RACK

XULT Kettlebell Rack

XT-KB-RACK

*Weights sold separately





VERTICAL STUDIO RACK

XULT Vertical Studio Rack: 10 Pairs XT-VERT-STUDIO-10

*Weights sold separately



STUDIO PLATE/BAR RACK

XULT Studio Plate/Bar Rack XT-STUDIO-RACK

*Weights sold separately



A-FRAME DUMBBELL RACK WITH KB SHELF

XULT A-Frame DB Rack w/KB Shelf: 8 Pairs XT-AFRAME-DBKB-08



DUMBBELL FLAT RACK

XULT Dumbbell Flat Rack: 10 Pairs XT-FLAT-DB-10



THREE-TIER DUMBBELL SADDLE RACK

XULT Three-tier Dumbbell Saddle Rack: 10 Paris XT-3TIER-SADDLE-10



STABILITY BALL RACK THREE BALLS

XULT Stability Ball Rack: 3 Balls XT-RACK-ST-BALL-03



XULT FITNESS

1600 LANDMARK DRIVE
COTTAGE GROVE, WI 53527

XULTFITNESS.COM

TOLL-FREE 866.693.4863



©2018 XULT FITNESS. ALL RIGHTS RESERVED.
PRODUCT SPECIFICATIONS SUBJECT TO CHANGE WITHOUT NOTICE.