

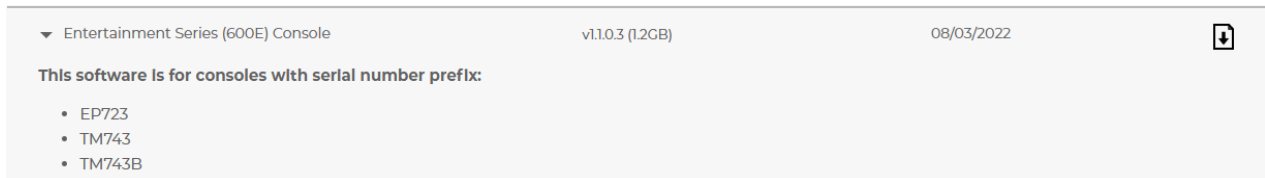
Updating Your Console

To proceed, you must have:

- A blank USB flash drive formatted to FAT32. (The 600E console requires USB version 2.0.)
Note: Some older consoles cannot recognize large flash drives.
- Your console's serial number

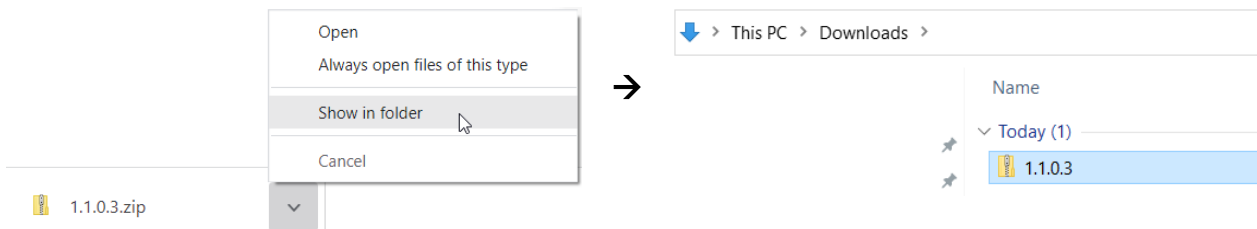
Downloading Software

1. Find your model on the [Vision Fitness Software Updates](#) page. Click the pulldown to the left of the model name.



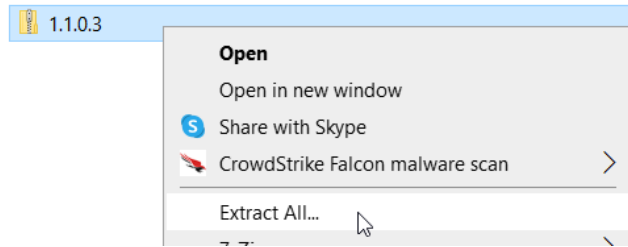
Important: The serial number prefix in the software listing must match your machine's serial number prefix **exactly**. **Installing incorrect software can corrupt your console, making your equipment unusable.** If you are unsure about software, contact your local Vision retailer or customer tech support before proceeding.

2. After verifying that the software is correct for your model, click the **Download** icon. The download will display in the bottom corner of your screen.
3. When the download is complete, click the arrow and select "Show in folder" to see the zipped software in your Downloads folder.

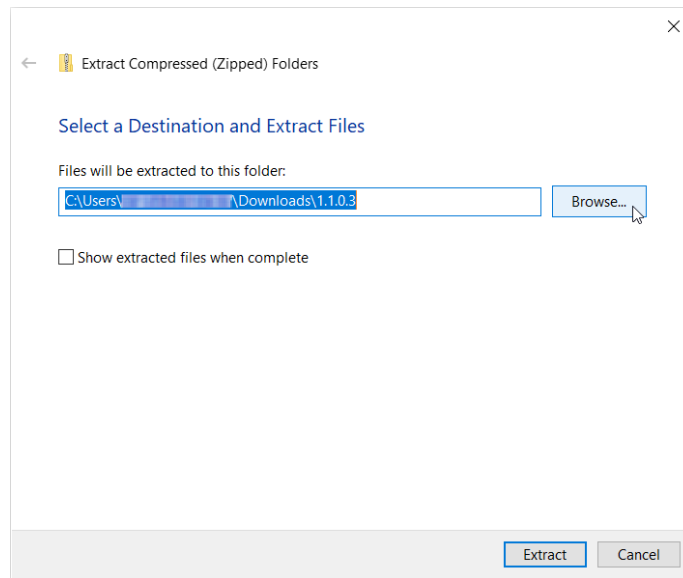


4. Insert your empty flash drive into your computer's USB port.

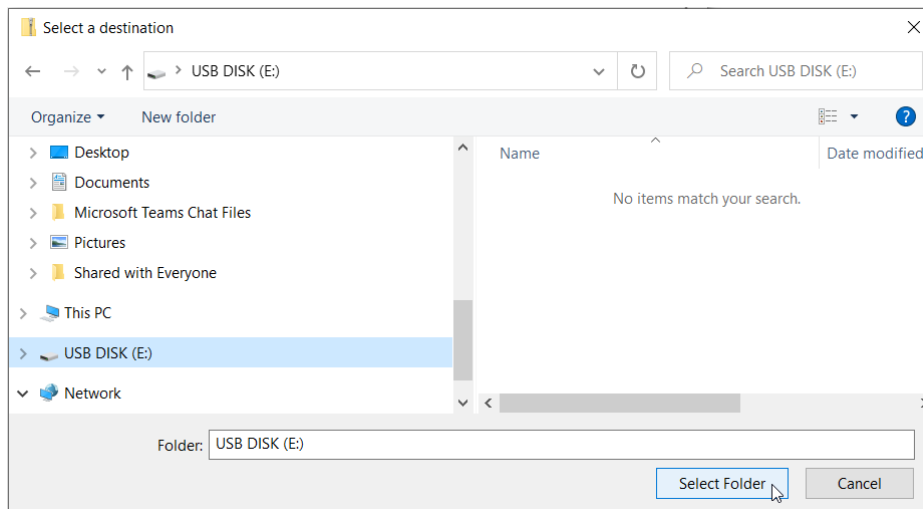
5. Right-click the zipped software folder within Downloads and select “Extract All...”



6. Click **Browse** to find the USB disk drive where you will extract the files.

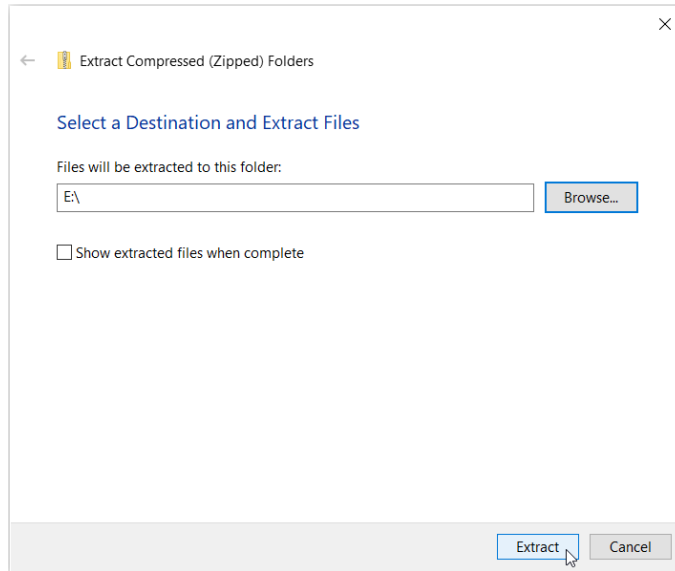


7. Click “USB DISK”, then click **Select Folder**.



Note: The flash drive shown in this example is USB DISK (E:), but flash drives can have different names (like Disk or Drive) and letters (like D, E, or F), depending on the computer.

8. Click **Extract**.

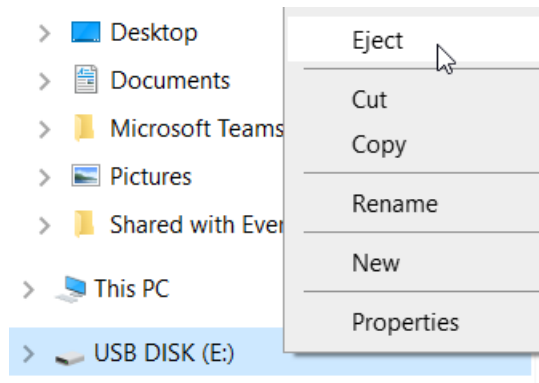


The software will extract to your flash drive:

Name	Date modified	Type	Size
apps	3/20/2023 2:16 PM	Compressed (zipp...	95,086 KB
assets	3/20/2023 2:16 PM	Compressed (zipp...	285,179 KB
io	3/20/2023 2:16 PM	Compressed (zipp...	12 KB
os	3/20/2023 2:16 PM	Compressed (zipp...	579,683 KB
third_party_apps	3/20/2023 2:16 PM	Compressed (zipp...	335,189 KB
update	3/20/2023 2:16 PM	XML Document	2 KB
updater	3/20/2023 2:16 PM	Compressed (zipp...	2,079 KB

Important: Do not change or rename the file path or folder names or your update will fail.

9. Right-click on USB DISK (E:) and select “Eject”. Remove the flash drive from your computer.



Installing Software

Go to the correct section below for your machine.

600E

10. Insert the flash drive into the console USB port.
11. Press and hold the top-center of the touchscreen for 5 seconds until the 'Product Dashboard' appears.
12. Press 'Machine Settings' and enter '1 0 0 1' to access Manager Mode.
13. Press 'Update', then 'Update from USB', then 'Install all updates'.
14. When the installation is complete, remove the flash drive.

Older Consoles (before 2020)

10. With the console powered on, insert the flash drive into the console USB port.

Note: Some treadmill consoles require the console to be powered off/safety key removed before the flash drive is inserted. If the machine does not update the first time, retry the update with the machine powered off to start.

11. If your console did not automatically begin the update as soon as the console powers on/flash drive is inserted, press Enter to start the update. (If pressing Enter does not start the update, make sure that the file path to the software is correct on your flash drive.)

Note: If your console states "no updates found", this indicates that your software was current prior to attempting the update. No further action is required.

12. Monitor your console throughout the update in case you are prompted for additional user input.
13. If the console does not automatically reboot after the update is completed, turn the machine off and then on again. The new software version should display on the console.